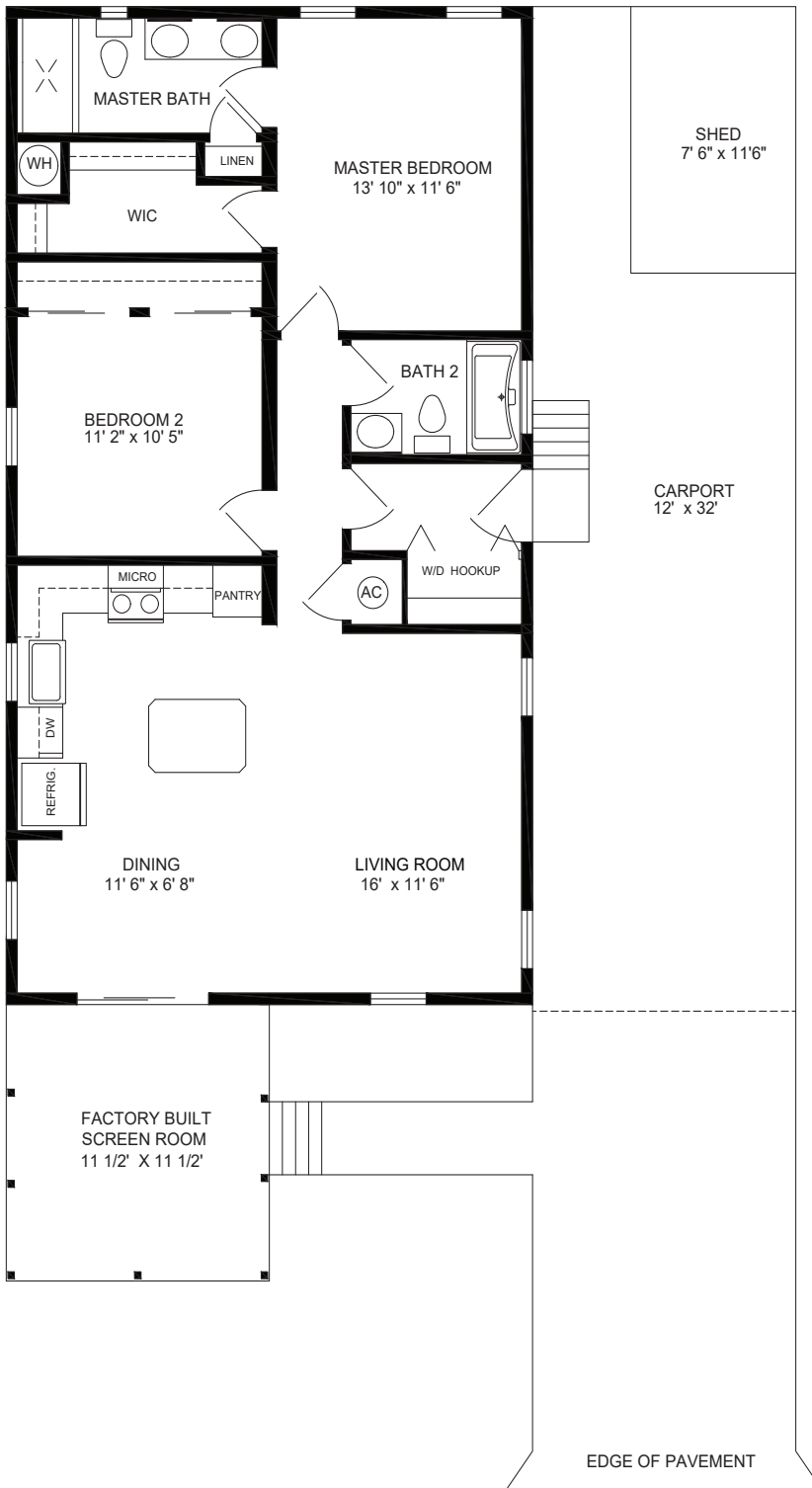


23 QUEEN PALM DRIVE

2 BEDROOM / 2 BATH

1,040 sq. ft.

**24' x 43'4" including
Factory Built Screen Room
11.5' x 11.5'**



23 QUEEN PALM DRIVE MODEL OPTIONS*



KITCHEN

- Recessed LED Can Lighting with Dimmer Switch
- Single Bowl Stainless Steel Farm Sink
- Samsung® Stainless Steel Appliance Package
- Premium Wilsonart® Laminate Countertops
- 3-Door Pantry
- Pot/Pan Drawers

INTERIOR

- MOEN® Faucets Throughout
- Acrylic Block Window in Bathroom
- Ball Bearing, Full Extension Drawer Guides
- Linen Cabinet Over Commode in Hall Bath

GENERAL

- 2" x 6" Exterior Walls with 16" on Center
- Upgraded Insulation Package - R30 Ceilings, R19 Walls, R11 Floors
- 36"9 Lite Door with Deadbolt
- Vinyl Frame Thermal Pane Windows with Mullions
- 6' Thermal Sliding Glass Doors
- Window Lineals
- Factory Built Screened Porch with Composite Decking
- Decorative Concrete Drieway
- Tape and Textured Finished Drywall Throughout
- 10 Year Structural Warranty

* As shown in the Leecorp Homes Model Center.
Subject to change without notice. 11/1/2020

LEECORP HOMES ESTERO MODEL CENTER

20251 S. Tamiami Trail, Estero, FL 33928

239.498.2220 • 800.428.1318 • www.LeeCorpHomes.com

